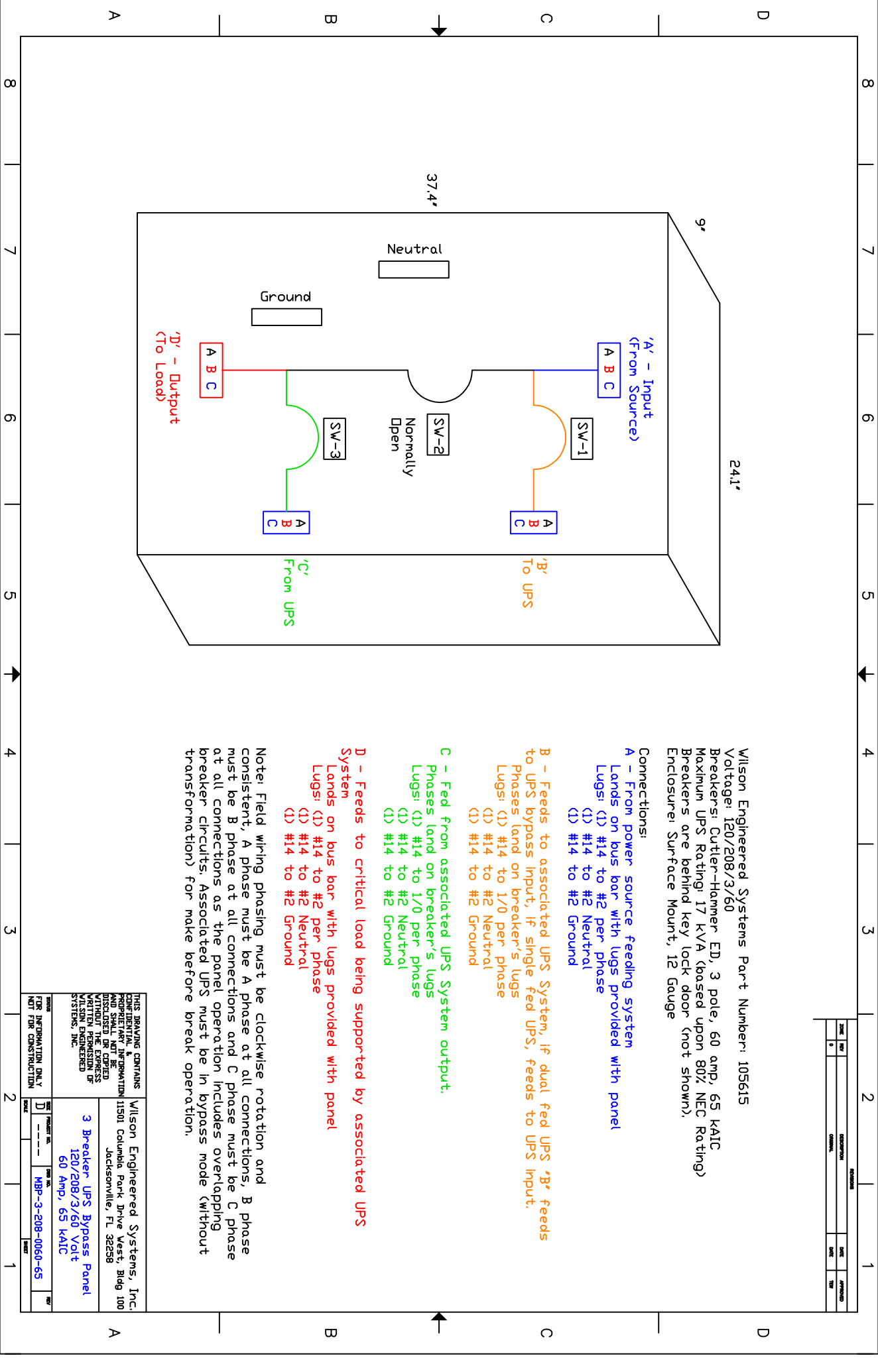


| DATE | BY | DESCRIPTION | DATE | BY |
|------|----|-------------|------|----|
|      |    |             |      |    |
|      |    |             |      |    |



Wilson Engineered Systems Part Number: 105615

Voltage: 120/208/3/60

Breakers: Cutler-Hammer ED, 3 pole, 60 amp, 65 KAIC

Maximum UPS Rating: 17 KVA (based upon 80% NEC Rating)

Breakers are behind key lock door (not shown).

Enclosure: Surface Mount, 12 Gauge

**Connections:**

**A - From power source feeding system**  
Lands on bus bar with lugs provided with panel

Lugs: (1) #14 to #2 per phase  
(1) #14 to #2 Neutral

(1) #14 to #2 Ground

**B - Feeds to associated UPS System, if dual fed UPS 'B' feeds to UPS bypass input, if single fed UPS, feeds to UPS input.**

Phases land on breaker's lugs

Lugs: (1) #14 to 1/0 per phase  
(1) #14 to #2 Neutral

(1) #14 to #2 Ground

**C - Feed from associated UPS System output.**

Phases land on breaker's lugs

Lugs: (1) #14 to 1/0 per phase  
(1) #14 to #2 Neutral

(1) #14 to #2 Ground

**D - Feeds to critical load being supported by associated UPS System**

Lands on bus bar with lugs provided with panel

Lugs: (1) #14 to #2 per phase  
(1) #14 to #2 Neutral

(1) #14 to #2 Ground

Note: Field wiring phasing must be clockwise rotation and consistent, A phase must be A phase at all connections, B phase must be B phase at all connections and C phase must be C phase at all connections as the panel operation includes overlapping breaker circuits. Associated UPS must be in bypass mode (without transformation) for make before break operation.

THIS DRAWING CONTAINS  
CONFIDENTIAL & PROPRIETARY INFORMATION  
AND SHALL NOT BE REPRODUCED,  
COPIED, OR TRANSMITTED IN ANY FORM  
WITHOUT THE EXPRESS WRITTEN PERMISSION OF  
WILSON ENGINEERED SYSTEMS, INC.

Wilson Engineered Systems, Inc.  
11501 Columbia Park Drive West, Bldg 100  
Jacksonville, FL 32258

**3 Breaker UPS Bypass Panel**  
120/208/3/60 Volt  
60 Amp, 65 KAIC

|      |    |             |      |    |
|------|----|-------------|------|----|
| DATE | BY | DESCRIPTION | DATE | BY |
|      |    |             |      |    |
|      |    |             |      |    |

FOR INFORMATION ONLY  
NOT FOR CONSTRUCTION

PROJECT NO. MBR-3-208-0060-65