

# POWERVAR

## Single-Phase Power Conditioners



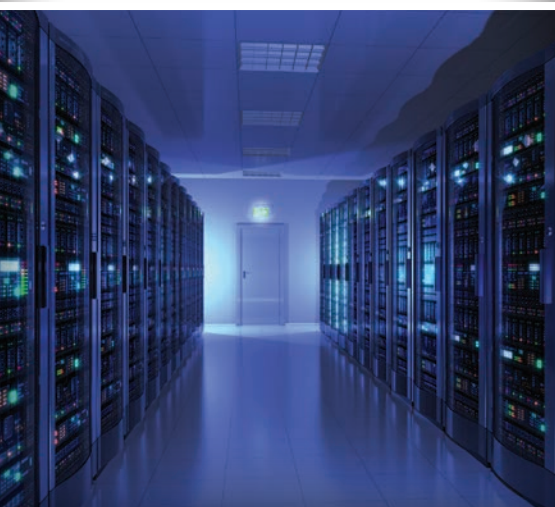
For use with large power loads or those applications with dual-voltage requirements.

If you have small or mid-range computer systems, multiple network servers, large phone systems, or other critical equipment which requires more power, POWERVAR Single-Phase Power Conditioners can save you time and frustration.

Whether the electrical noise is generated on the line or by the load, thanks to the low impedance isolation transformer this conditioner protects your system from all the problems caused by power disturbances, ranging from lost data to "No Trouble Found" service calls.

All models have UL and cUL listings.

- Product sizes range from 2 kVA to 9.6 kVA
- Systems provide clean power at 120, 208 or 240 VAC for loads up to 40 amps
- Let through voltage is less than 10 volts normal mode and less than 0.5 volts neutral-to-ground when tested to ANSI/IEEE C62.41
- Dual-output models can simultaneously protect both high-voltage and low-voltage systems at a less expensive cost and effort than installing two separate conditioners
- Hardwired and plug/receptacle models are available
- All models include POWERVAR's five-year warranty on parts and labor



North American	Load Current (Amps)	Load Power (kVA)	Input Voltage (VA)	Output Voltage (VA)	Frequency (Hz)	Case Size	Ship Weight (lb)
ABC2000-2S	8.33**	2.0	208/240	120/240	60	A	73
ABC2030-2S*	8.33**	2.0	208/240	120/240	60	A	71
ABC3000-11	24	2.8	120	120	60	A	85
ABC3030-11*	25	3.0	120	120	60	A	82
ABC3000-2S	12.5**	3.0	208/240	120/240	60	A	85
ABC3030-2S*	12.5**	3.0	208/240	120/240	60	A	83
ABC3300-33	15.8	3.3	208	208	60	A	94
ABC3800-11	31.7	3.8	120	120	60	A	98
ABC3830-11*	31.7	3.8	120	120	60	A	82
ABC3800-2S	15.8**	3.8	208/240	120/240	60	A	95
ABC3830-2S*	15.8**	3.8	208/240	120/240	60	A	91
ABC5000-2S	20.8**	5.0	208/240	120/240	60	A	121
ABC5000-33	23.5	5.0	208	208	60	A	117
ABC5030-2S*	20.8**	5.0	208/240	120/240	60	A	130
ABC5800-2S	24**	5.8	208/240	120/240	60	A	130
ABC6030-2S*	25**	6.0	208/240	120/240	60	A	130
ABC9600-2S*	10.0	9.6	208/240	120/240	60	B	175

\* harwired connections.

\*\* load amps per leg

#### Case Dimensions (H x W x D) - in.:

A Case - 10.00 x 12.47 x 18.00

B Case - 18.00 x 17.00 x 25.00